



MONTHLY MEMBERSHIP PROGRESS REPORT

District 1 H

Results as of: 06/30/2018

GMT: STEVE ANTON

LOCATION ILLINOIS

GMT CA

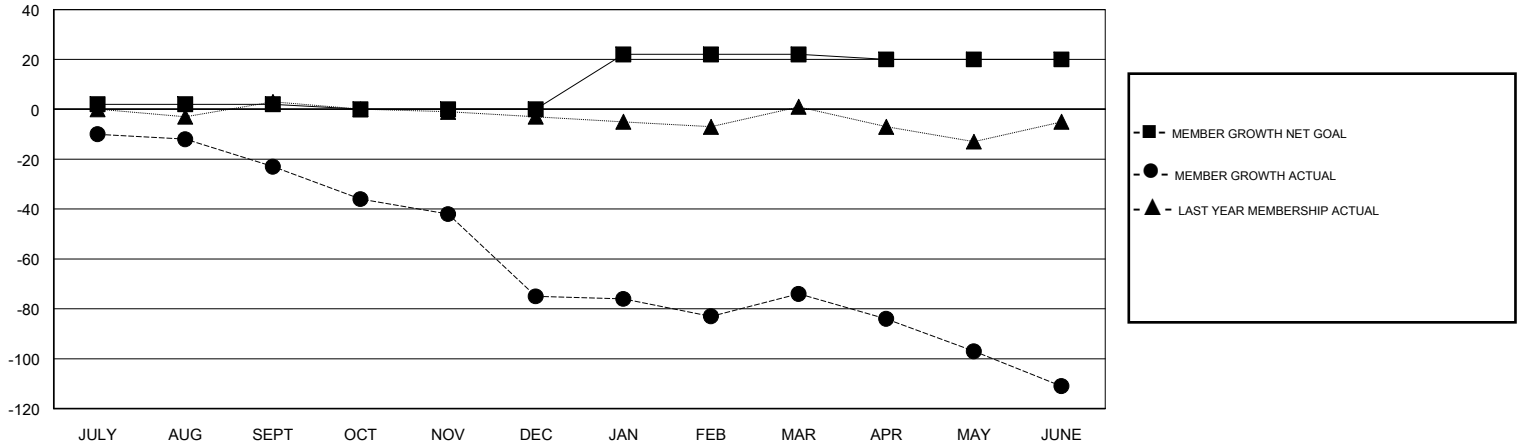
Clubs			
RESULTS FOR 2017-2018			
QUARTER	NEW CLUB GOAL	NEW CLUBS	DROPPED CLUBS
JULY/AUG/SEPT	0	0	0
OCT/NOV/DEC	0	0	2
JAN/FEB/MAR	1	0	0
APR/MAY/JUNE	0	0	0

Members			
RESULTS FOR 2017-2018			
QUARTER	MEMBER GROWTH NET GOAL	MEMBER GROWTH ACTUAL	DROPPED MEMBERS ACTUAL (including transfers)
JULY/AUG/SEPT	2	11	33
OCT/NOV/DEC	-2	10	59
JAN/FEB/MAR	22	22	21
APR/MAY/JUNE	-2	25	51

GOALS AND ACTUAL NEW CLUBS CUMULATIVE



GOALS AND ACTUAL MEMBERS CUMULATIVE



DROPPED CLUBS: 2	26 CLUBS OF 42 ADDED 1 OR MORE NEW MEMBERS	<u>GENDER DISTRIBUTION</u>	
DROPPED MEMBERS		MALE	800 (77.22%)
DECEASED	14	FEMALE	236 (22.78%)
CLUB CANCELLED	22	Women Percentage Fiscal Year Goal: 23%	
OTHER	128	TOTAL FAMILY UNIT MEMBERS	0
TOTAL	164	FAMILY MEMBERS PAYING HALF DUES	0

[CLICK HERE FOR CUMULATIVE MEMBERSHIP DATA](#)